

**MINI SUPER SCREEN****Animal Feed****CASE HISTORY**

FEDERATED  
CO-OPERATIVE LIMITED  
Calgary, Alberta,  
Canada

**Background**

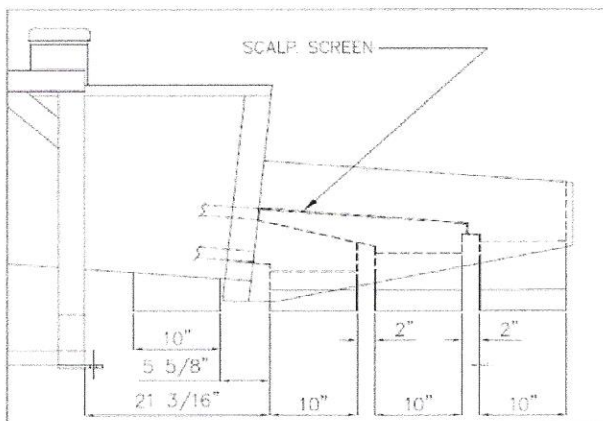
Federated Co-operatives Limited (FCL) is a multi-faceted organization with approximately 250 retail locations across Western Canada. The goal of FCL is to improve the economic position of its member-owners.

**Challenge**

The Calgary Feed Plant contacted BM&M to help increase both capacity and efficiency for their Cube, Pellet and Crumble screening. Given this would be the first installation for Calgary, BM&M's Sales Representative conducted a pre-sales site visit to ensure their project objectives were clearly understood.

**Solution**

BM&M supplied a 4' wide x 8' long 2-Deck (4 output) Mini Super Screen with an ingenious Cube scalping screen located within the discharge chute – reducing the capital cost, while still meeting FCL's project objectives.

**Cube, Pellet & Crumble Technology**

The Mini Super Screen was fitted with a 24-hour Hanger Lubrication System, Ball Decks below the screens for self-cleaning and a 304 stainless steel Infeed Chute for long term durability.

BM&M's minimal screen vibrations eliminated the need for heavy support structures while its design flexibility allowed Calgary to re-use all of their existing outlet chute locations.

All BM&M screening equipment includes:

- 3-Year Drive Unit Warranty
- 300 RPM Drive Speed
- Pre and Post-Sales Laboratory Testing